

## SMX 方頭驅動液壓扳手

- 雙防逆轉卡爪裝置，高效能荷載。
- 360度旋轉調整反作用力承受臂。
- 卡榫式反作用力臂，簡易更換反作用力臂。
- 360\*180度出入口油口萬向旋轉。
- 按鈕式放鬆驅動頭，簡易更換驅動頭。
- 單向棘輪可確保無需手持和其他工具的操作。
- 採高科技航空材質，鋁鈦合金及高強度合金鋼製造。
- 反鎖開關。
- 特殊防銹表面處理。
- 最小操作半徑。
- 具可推進，防止倒退設計。可吸收反彈衝擊裝置。
- 具油壓超壓釋放安全裝置。

扭力精度：+/-3% 重複精度：100%

### Square Drive Wrenches

#### Lightweight High Power Wrench for Sockets or Allen-key

- ※Dual Pawl Mechanism-Heavy duty.
- ※360 degree Reaction Arm-Easy to working in any position.
- ※Click-on Reaction Arm-Easy to change Reaction Arm.
- ※360 X 180 degree Swivel-Hose-free operation.
- ※Push-button drive release-Quick change drive side.
- ※One-way Ratchet-the only way to assure hands-free and multi-tool operation.
- ※Aviation material Body housing-Aluminum-Titanium alloy and high strength steel.
- ※Anti-Lock Switch
- ※Anti-Rust Finish-Special surface treatment.
- ※Small Operating Radius.
- ※Anti-Back Lash Mechanism.
- ※"Drop Hole" will protect over pressure operating.

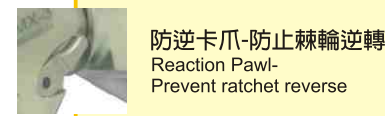
Torquet Accuracy：+/-3%  
Repeatability：100%



附安全握把  
Removable handle

鋼質護套  
Steel boot

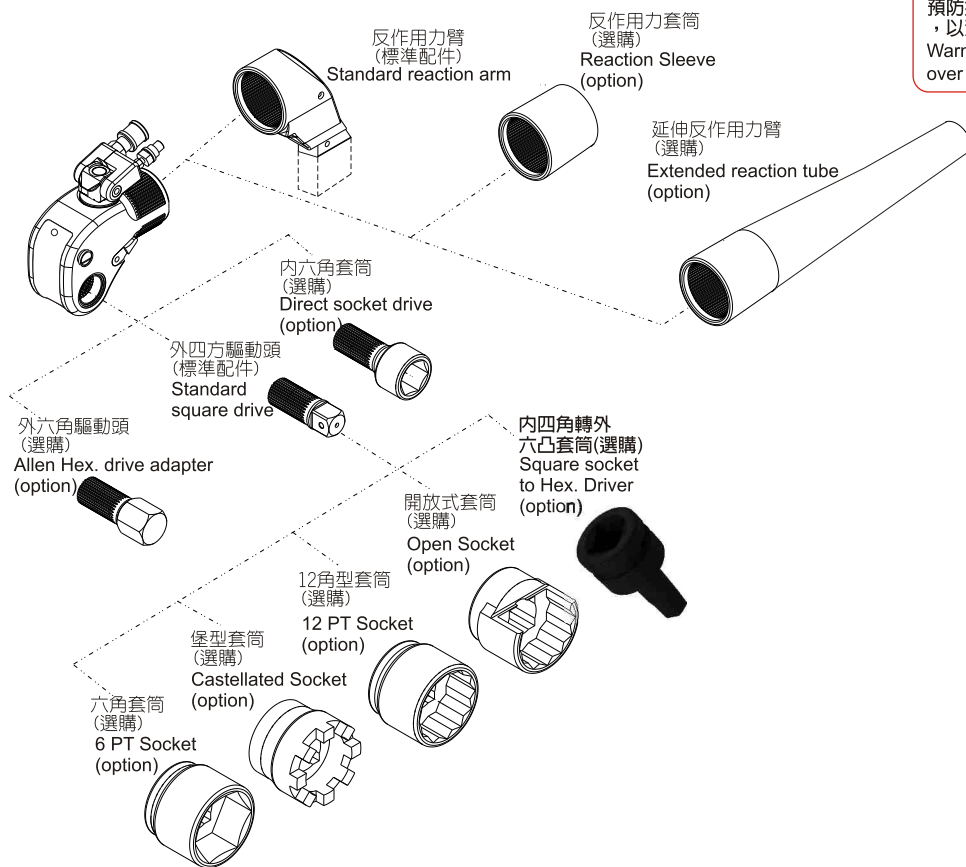
按鈕式快速替換方形驅動頭  
Button change square driver



防逆卡爪-防止棘輪逆轉  
Reaction Pawl-  
Prevent ratchet reverse



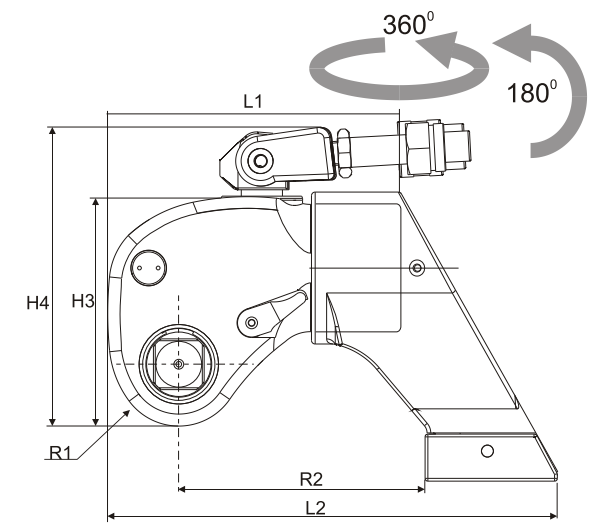
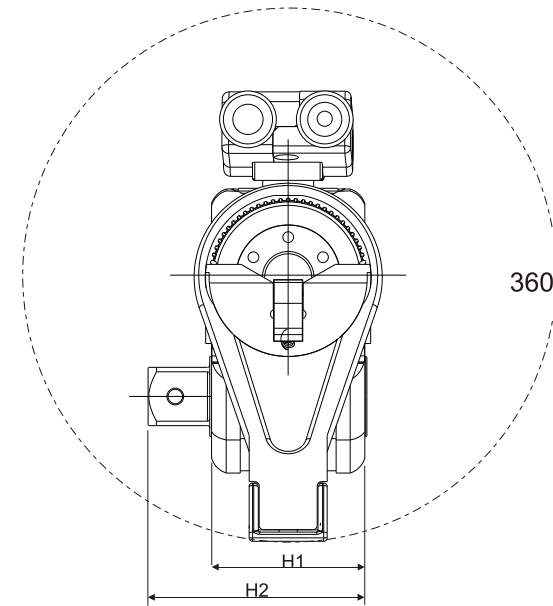
WARNING  
警告  
Warning drop hole  
溢油孔  
預防接頭連接不正確或超壓使用時，  
以流出液壓油為警告作用。  
Warning wrong coupler connect or  
over pressure which leaking oil.



訂購型號	
How to build Torque Wrench drive and socket	
	型號 DS [內六角套筒尺寸] Model DS [Hex. Socket size] Example: SMX-3DS1-13/16"
	型號 AH [外六角驅動尺寸] Model AH [Hex. Drive size] Example: SMX-3AH32mm
	6PTS- [驅動軸尺寸]-[內六角套筒尺寸] 6PTS- [Drive size]-[Socket size] Example: 6PTS-1"-50
	CS- [驅動軸尺寸]-[套筒尺寸] CS- [Drive size]-[Socket size] Example: CS-1"-2-3/4"
	12PTS- [驅動軸尺寸]-[內十二套筒尺寸] 12PTS- [Drive size]-[Socket size] Example: 12TPS-1"-50
	OPS- [驅動軸尺寸]-[套筒尺寸] OPS- [Drive size]-[Socket size] Example: OPS-1"-6PT50
	SMX-4F [內四角套筒]-[外六角驅動軸尺寸] SMX-4F [Square socket] [Hex. Drive] Example: SMX-4F1"-6M22mm

型號 Model No.	驅動頭 Square Drive	最小扭力 Min. Torque		最大扭力 Max. Torque		螺栓範圍 Bolt size	重量 Weight	
		(lb.ft)	(N.m)	(lb.ft)	(N.m)		(lb)	(kg)
SMX-1	3/4"	201	273	1409	1911	16~36	5.29	2.40
SMX-3	1"	475	645	3328	4512	22~48	11.34	5.15
SMX-5	1-1/2"	810	1099	5672	7690	27~56	19.50	8.86
SMX-8	1-1/2"	1136	1540	6951	10780	30~64	28.20	12.80
SMX-10	1-1/2"	1670	2264	11688	15847	36~72	35.90	16.30
SMX-20	2-1/2"	2864	3883	20049	27183	42~90	66.98	30.41
SMX-25	2-1/2"	3659	4961	25611	34725	48~100	85.90	39.00
SMX-35	2-1/2"	5376	7289	37632	51022	64~120	95.15	43.20

型號 Model No.	驅動頭 Square Drive	L1		L2		H1		H2		H3		H4		R1		R2	
		(in)	(mm)	(in)	(mm)	(in)	(mm)	(in)	(mm)	(in)	(mm)	(in)	(mm)	(in)	(mm)	(in)	(mm)
SMX-1	3/4"	4.92	125	7.56	192	1.96	50.0	2.80	71.0	3.56	90.5	5.13	130.5	0.97	24.7	4.48	113.7
SMX-3	1"	6.35	161	9.58	243	2.63	66.8	3.70	94.0	4.87	123.7	6.52	165.7	1.29	33.0	5.26	133.7
SMX-5	1-1/2"	8.22	209	10.63	270	3.14	80.0	4.80	122.0	5.86	149.0	7.62	193.5	1.53	39.0	5.47	139.0
SMX-8	1-1/2"	8.74	222	11.57	294	3.54	90.0	5.11	130.0	6.57	167.0	8.61	218.6	1.85	47.0	6.02	153.0
SMX-10	1-1/2"	9.56	243	14.52	369	3.93	100.0	5.67	144.0	7.34	186.6	9.08	230.7	1.95	49.7	10.26	260.7
SMX-20	2-1/2"	12.20	310	15.24	387	4.72	120.0	7.20	183.0	8.66	220.0	10.71	272.0	2.32	59.0	7.32	186.0
SMX-25	2-1/2"	12.99	330	16.06	408	5.38	136.6	7.83	198.9	9.72	247.0	11.77	299.0	2.59	66.0	7.79	198.0
SMX-35	2-1/2"	13.89	353	21.22	539	5.81	147.8	8.62	218.7	10.90	276.9	12.35	313.9	2.98	75.7	12.68	322.1



反作用力臂細齒定位  
Reaction arm  
small tooth orientation



固定掣子  
Fixed Button



棘輪細齒傳動  
Small tooth driver

