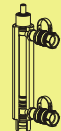


## SRD Series



Capacity:  
**4-25 ton**

Stroke:  
**29-260mm**

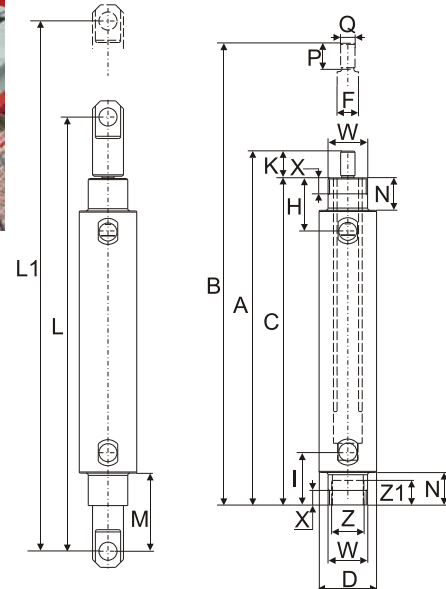
Maximum Operating Pressure:  
**700 bar**

## SRD 液壓雙動千斤頂

- 雙動操作，適用於推力及拉力之應用。
- 安全閥設計防止超壓損壞。
- 液壓缸外螺牙、主軸螺牙及底座螺孔便於固定。(詳見規範)
- 主軸硬鉻處理耐磨、防蝕。
- 防塵環設計可保護活塞及內徑避免污染。
- 表面粉體塗裝美觀抗腐蝕、防銹。
- 各型號均含SQB-3/8UF快速接頭及防塵蓋。

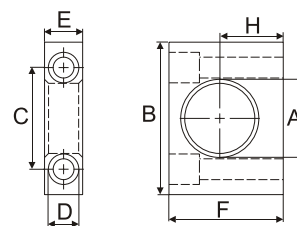
### Double-Acting, Precision and High Cycle Cylinders

- ※ Double-acting operation develops force in both directions, provide maximum versatility.
- ※ Designed for long life, the best choice for production applications.
- ※ Collar threads, plunger threads and base mounting holes for easy fixturing. (See chart)
- ※ Hard chrome plated plunger resists wear and corrosion.
- ※ Wiper rings protect the piston and bore from contamination.
- ※ Powder coat finish for increased corrosion resistance and antirust.
- ※ Come with SQB-3/8UF female coupler & dust cap.



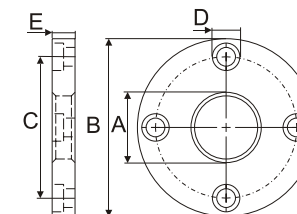
型號 Model Number	能力 Cylinder Capacity	揚程 Stroke	外部尺寸 Outer Dimension								總油量 Oil Cap.	本身高 Coll. Ht.	伸長 總高 Ext. Ht.	本體長 Body Length	外徑 Out. Diam.	內徑 Cyl. Bore Diam.	主軸直徑 Plngr. Diam.
			最大出力 Max. Cyl. Cap.		受壓面積 Cylinder Eff. Area		推		拉								
			推 push	拉 pull	推 push	拉 pull	推 push	拉 pull	推 push	拉 pull							
SRD-41	4(35)	29	35	16	5.1	2.2	14	6	186	214	162	50.1	25.4	19.0			
SRD-43	4(35)	80	35	16	5.1	2.2	40	17	237	316	213	50.1	25.4	19.0			
SRD-46	4(35)	156	35	16	5.1	2.2	79	34	313	468	289	50.1	25.4	19.0			
SRD-91	9(80)	29	80	44	11.4	6.3	32	18	223	251	198	63.5	38.1	25.4			
SRD-93	9(80)	80	80	44	11.4	6.3	90	50	274	353	249	63.5	38.1	25.4			
SRD-96	9(80)	156	80	44	11.4	6.3	177	98	350	505	325	63.5	38.1	25.4			
SRD-910	9(80)	257	80	44	11.4	6.3	293	162	452	709	427	63.5	38.1	25.4			
SRD-166	16(142)	159	142	77	20.3	10.6	323	169	389	548	359	76.2	50.8	35.0			
SRD-1610	16(142)	260	142	77	20.3	10.6	528	276	491	751	461	76.2	50.8	35.0			
SRD-256	25(222)	159	222	98	31.7	13.7	504	218	424	583	397	92.2	63.5	47.8			
SRD-2510	25(222)	260	222	98	31.7	13.7	824	356	526	786	499	92.2	63.5	47.8			

## SAD- 1 底盤 Foot Mounting with Retain Nut



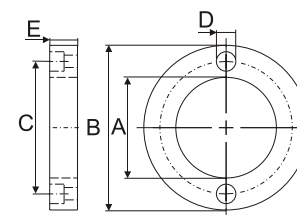
型號 Model No.	油缸能力 Cyl. Cap. ton(kN)	尺寸 Dimensions (mm)						
		A	B	C	D	E	F	H
SAD-141	4(35)	35.1	76.2	58.0	10.5	20	57.0	31.8
SAD-171	9(80)	50.8	101.6	78.0	13.5	25	82.5	44.5
SAD-181	16(142)	66.8	127.0	95.2	20.0	35	100.0	52.4
SAD-191	25(222)	82.6	158.8	117.5	26.5	45	125.0	63.5

## SAD- 2 法蘭座 Flange Mounting with Retain Nut



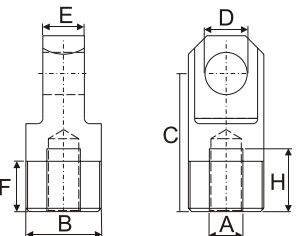
型號 Model No.	油缸能力 Cyl. Cap. ton(kN)	尺寸 Dimensions (mm)						
		A	B	C	D	E	F	H
SAD-142	4(35)	35.1	98.6	78.5	10.4	19.0	-	-
SAD-172	9(80)	50.8	120.7	98.6	10.4	25.4	-	-
SAD-182	16(142)	66.8	143.0	115.9	13.5	35.0	-	-
SAD-192	25(222)	82.6	165.1	135.6	16.8	44.5	-	-

## SAD- 3 固定環 Retain Nut



型號 Model No.	油缸能力 Cyl. Cap. ton(kN)	尺寸 Dimensions (mm)						
		A	B	C	D	E	F	H
SAD-143	4(35)	1-3/8"-12	57	49.5	6.3	9.5	-	-
SAD-173	9(80)	2"-12	75	65.5	6.7	12.7	-	-
SAD-183	16(142)	2-5/8"-16	92	81.0	6.7	19.0	-	-
SAD-193	25(222)	3-1/4"-16	108	96.5	6.7	25.4	-	-

## SAD- 4 I接頭 Clevis Eye



(請對照下列 L, L1 及 M 尺寸)  
(See chart below for mounting dimensions L, L1 and M)

型號 Model Number	外部尺寸 Outer Dimension						牙紋尺寸 Thread Dimension						重量 Wt. (kg)	
	底部前進 油孔位置 Base to Adv. Port H (mm)	頂部回油 油孔位置 Top to Ret. Port I (mm)	主軸突出 Plunger Protrusion K (mm)	U型鉤座 Clevis Eye Mounting Dim. (mm)			頸長 Neck Length N (mm)	主軸 外牙長 Plngr. Thread Length P (mm)	主軸 外牙 Plngr. Ext. Thread Q	油缸外牙 Collar Thread W	外牙長 Collar Thread Length X (mm)	底內牙 Int. Base Thread Z		底內牙長 Int. Base Thread Length Z1 (mm)
				L	L1	M								
SRD-41	48	48	24	257	286	41	29	19.1	1/2"-20	1-3/8"-12	11	1-1/8"-20	9	2.0
SRD-43	48	48	24	307	387	41	29	19.1	1/2"-20	1-3/8"-12	11	1-1/8"-20	9	2.6
SRD-46	48	48	24	384	540	41	29	19.1	1/2"-20	1-3/8"-12	11	1-1/8"-20	9	3.6
SRD-91	58	58	25	295	324	38	38	19.1	3/4"-16	2"-12	14	1-11/16"-18	14	3.0
SRD-93	58	58	25	347	426	38	38	19.1	3/4"-16	2"-12	14	1-11/16"-18	14	4.2
SRD-96	58	58	25	423	579	38	38	19.1	3/4"-16	2"-12	14	1-11/16"-18	14	5.6
SRD-910	58	58	25	525	782	38	38	19.1	3/4"-16	2"-12	14	1-11/16"-18	14	7.3
SRD-166	74	74	30	491	650	52	54	25.4	1-1/8"-12	2-5/8"-16	22	2-3/16"-16	24	10.2
SRD-1610	74	74	30	593	853	52	54	25.4	1-1/8"-12	2-5/8"-16	22	2-3/16"-16	24	14.5
SRD-256	89	89	27	530	689	53	70	25.4	1-1/2"-12	3-1/4"-16	29	2-3/4"-16	26	16.0
SRD-2510	89	89	27	631	892	53	70	25.4	1-1/2"-12	3-1/4"-16	29	2-3/4"-16	26	20.3