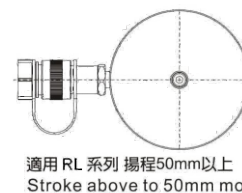
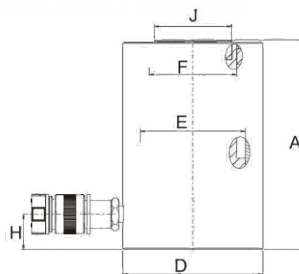
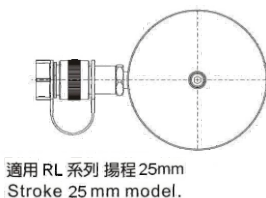
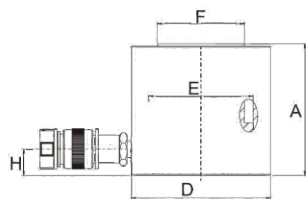




RL-Series: Single-Acting General Type

- ◆ Cylinder is made of high-strength alloy steel, are hardened and not easily deformed.
- ◆ Plunger surface is hard chromium, wear and corrosion resistance.
- ◆ Strong spring to accelerate the speed of the plunger retraction.
- ◆ Special sizes can be customized.



Item	Cylinder Capacity (Ton)	Stroke (mm)	Effective Area (cm ²)	Oil Capacity (cc)	Collapsed Height A(mm)	Extended Height B(mm)	Outside Diam. D(mm)	Inner Diam. E(mm)	Plunger Diam. F(mm)	Base to Adv. Port H(mm)	Saddle Diam. J(mm)	Weight (Kg)
★ RL05-120	5	120	9.6	115	200	320	45	35	28	20	—	1.9
★ RL05-150		150	9.6	144	230	380	45	35	28	20	—	2.1
RL10-25	10 (101)	25	14.46	36.1	80	105	70	42.93	38.10	19.5	—	2.4
RL10-50		50	14.46	72.3	130	180	57	42.93	38.10	19.5	—	2.5
RL10-75		75	14.46	108.4	155	230	57	42.93	38.10	19.5	35	3.1
RL10-100		100	14.46	144.6	180	280	57	42.93	38.10	19.5	35	3.4
★ RL10-120		120	15.90	191	200	320	60	45.00	38.10	20	—	3.4
★ RL10-150	150	15.90	238	230	380	60	45.00	38.10	20	—	3.8	
RL20-25	20 (198)	25	28.26	70.7	80	105	90	60.00	50.00	17.0	—	3.7
RL20-50		50	28.26	141.3	135	185	79	60.00	50.00	22.0	—	4.9
RL20-75		75	28.26	212.0	160	235	79	60.00	50.00	22.0	40	5.6
RL20-100		100	28.26	282.6	185	285	79	60.00	50.00	22.0	40	6.3
★ RL20-120		120	28.26	339	200	320	80	60.00	50.00	20.0	—	6.1
★ RL20-150	150	28.26	423.9	230	380	80	60.00	50.00	20.0	—	6.6	
RL30-25	30 (294)	25	42.00	105	85	110	99	73.15	57.15	19	—	2.4
RL30-50		50	42.00	210	145	195	99	73.15	57.15	22.5	—	2.5
RL30-75		75	42.00	315	170	245	99	73.15	57.15	22.5	49.5	7.8
RL30-100		100	42.00	420	195	295	99	73.15	57.15	22.5	49.5	8.9
★ RL30-120	120	50.24	603	200	320	100	80.00	65.00	20.0	—	9.9	
★ RL30-150	150	50.24	753	230	380	100	80.00	65.00	20.0	—	11.1	
RL50-25	50 (498)	25	71.21	175.0	95	120	127	95.25	79.50	24.0	—	8.8
RL50-50		50	71.21	356.0	120	170	127	95.25	79.50	24.0	—	10.5
RL50-75		75	71.21	534.0	190	265	127	95.25	79.50	32.0	70	16.8
RL50-100		100	71.21	712.0	215	315	127	95.25	79.50	32.0	70	18.2
★ RL50-120	120	78.50	942.0	245	365	130	100.00	88.00	35.0	—	25.4	
★ RL50-150	150	78.50	1177	275	425	130	100.00	88.00	35.0	—	28	
RL100-25	100 (933)	25	133.27	333.1	100	125	177	130.30	104.90	20.0	—	16.9
RL100-50		50	133.27	666.3	160	210	177	130.30	104.90	20.0	84	26.8
RL100-100		100	133.27	1332.7	204	304	177	130.30	104.90	30.0	84	36.8
★ RL100-125		127	143.00	1816	250	377	178	135.00	103.00	30.0	—	42.6
RL100-150	150	133.27	1999.0	260	410	177	135.00	104.90	30.0	84	44.3	
RL150-50	150 (1407)	50	200.96	1004.8	200	250	215	160.00	115.00	50.0	99	50.2
RL150-100		100	200.96	2009.6	250	350	215	160.00	115.00	50.0	99	60.0
RL150-150		150	200.96	3014.4	300	450	215	160.00	115.00	50.0	99	68.9
RL200-50	200 (1984)	50	283.38	1416.9	200	250	255	190.00	135.00	50.0	115	71.6
RL200-100		100	283.38	2833.0	250	350	255	190.00	135.00	50.0	115	85.0
RL200-150		150	283.38	4250.7	300	450	255	190.00	135.00	50.0	115	98.5