



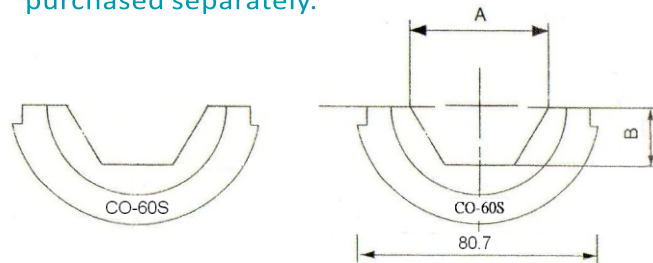
Large Tonnage Series

Suitable for transmission and distribution projects for 60Tons ~ 200Tons terminal wire connectors, clamp, steel and aluminum casing, cable and other multi-purpose, also applies to 110 ~ 1000KV EHV overhead lines or underground cable crimping use.



CO-60S

- ◆ Single-action compression tool, large tonnage, simple, available for widely compression function.
- ◆ The material of tool made of high carbon steel, heat treatment, not easily deformed.
- ◆ Hexagonal crimping, crimping range refer the parameters.
- ◆ Need to coordinate with hydraulic pump (power pump: CTE-25AS, hand pump: CP-700-2A).
- ◆ Able to customize dies in any sizes.
- ◆ Accessory a set of standard die, additional dies can be purchased separately.



CO-60S

Die Mold	A (mm)	B (mm)	C (mm)
6010SH	15.9	6.9	32
6012SH	19.3	8.4	23.9
6014SH	22.2	9.5	25.4
6016SH	25.4	10.9	16.8
6018SH	28.6	12.3	15.2
6020SH	31.7	13.4	19
6075SH	10.7	4.6	35.1
6076SH	12.7	5.5	28.4
6020AH	31.8	13.5	59.7
6024AH	38.1	16.3	49.5
6027AH	42.8	18.2	43.2
6030AH	47.6	20.2	57
6034AH	54	23	46.2
6036AH	57.2	24.2	44.5
6074AH	20.8	8.7	62
6075AH	25.4	10.6	62
6076AH	30.2	12.6	61.2

Steel Sleeve

Die Mold	Applicable wire
6010SH	ACSR300(45/7),795(45/7),336.4(26/7)
6012SH	ACSR300(24/7),477(26/7),3/8"S.G.W.
6014SH	ACSR300(54/7),795(26/7),636(26/7),7NO.8A.W.
6075SH	ACSR300(18/1),477(18/1),4/0(6/1)
6076SH	ACSR300(26/7)
6020SH	19NO.9A.W.

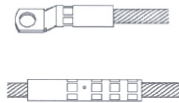
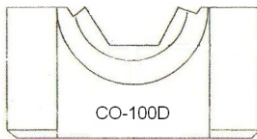
Aluminum Sleeve

Die Mold	Applicable wire
6020AH	ACSR336.4(26/7),AAC477(19),φ3/8"AW
6024AH	ACSR477(26/7),ACC636(36)
6027AH	ACSR636(24/7,26/7),7NO8A.W.
6030AH	ACSR954(54/7,45/7),795(26/7)19NO.8AW,ACC954(37)
6034AH	AAC1272(61)
6036AH	AAC1431(61),ACSR1272(45/7)
6075AH	ACSR4/0(6/1)
6076AH	ACSR300(26/7)



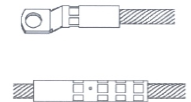
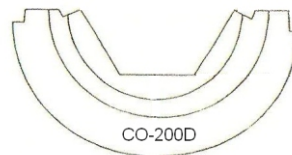
CO-100D

- ◆ Double- action compression tool, large-tonnage, oil return fast, easy to operate, available for widely compression function.
- ◆ The material of tool made of high carbon steel, heat treatment, not easily deformed.
- ◆ Hexagonal crimping, crimping range refer the parameters.
- ◆ Need to coordinate with hydraulic pump (power pump: CTE-25AD, hand pump: CP-700-2A-D).
- ◆ Able to customize dies in any sizes.
- ◆ Accessory a set of standard die, additional dies can be purchased separately.



CO-200D

- ◆ Double- action compression tool, large-tonnage, oil return fast, easy to operate, available for widely compression function.
- ◆ The material of tool made of high carbon steel, heat treatment, not easily deformed.
- ◆ Hexagonal crimping, crimping range refer the parameters.
- ◆ Need to coordinate with hydraulic pump (power pump: CTE-25AD, hand pump: CP-700-2A-D).
- ◆ Able to customize dies in any sizes.
- ◆ Accessory a set of standard die, additional dies can be purchased separately.

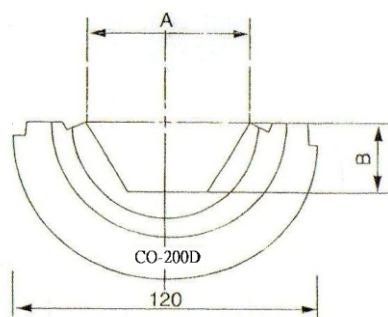
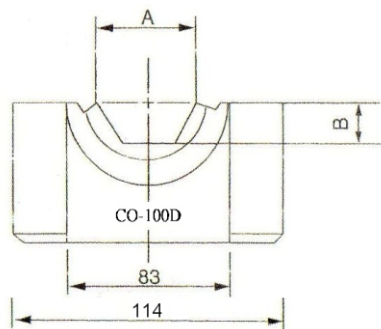
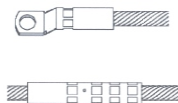


Selection Method for Large Tonnage Die

As the principle the outer diameter of crimp sleeve equal to the diagonal dimension die" to buy the die. This data is for reference only, specific size specifications subject to actual measured data.

Item	Output (Ton)	Compressed die sleeve sizes (mm ²)	Stroke (mm)	Oil Storage (cc)	Weight (Kg)	Remark
CO-60S	60	Copper D55 / Aluminum D55 / Steel D30	38.5	283	21.4	Hexagon
CO-100D	100	Copper D64 / Aluminum D71 / Steel D32	22	315	39.5	Hexagon
CO-200D	200	Copper D86 / Aluminum D100 / Steel D50	39	1130	104	Hexagon





CO-100D/200D Steel Sleeve

Aluminum Sleeve

Die Mold	A (mm)	B (mm)	C 100D/200D (mm)
G8.5	8.5	3.7	50/70
G10	10	4.3	45/70
G12	12	5.2	40/70
G16	16	6.9	40/70
G18	18	7.8	35/70
G20	20	8.7	35/70
G22	22	9.5	30/70
G23	23	10	30/60
G24	24	10.4	30/60
G26	26	11.3	30/60
G28	28	12.1	28/60
G30	30	12.99	25/60
G32	32	13.9	25/60
G44	44	19.1	--/35
G50	50	21.7	--/30

Die Mold	A (mm)	B (mm)	C 100D/200D (mm)
L22	22	9.5	75/128
L26	26	11.3	75/128
L30	30	12.5	75/128
L34	34	14.2	75/128
L38	38	16	75/128
L42	42	18.2	75/128
L44	44	18.6	75/128
L48	48	20.8	75/128
L52	52	22.5	75/128
L60	60	26	75/128
L65	65	28.2	75/128
L68	68	29.4	75/128
L71	71	30.7	75/128
L76	76	32.9	--/128
L90	90	39	--/128
L100	100	43.3	--/128

Copper Sleeve

Die Mold	A (mm)	B (mm)	C 100D/200D (mm)
C14	14	6.1	60/--
C17	17	7.4	60/--
C19	19	8.2	60/--
C23	23	10	60/--
C26	26	11.3	60/--
C29	29	12.6	60/--
C32	32	13.9	60/--
C36	36	15.6	55/--
C38	38	16.5	55/--
C42	42	18.2	55/--
C47	47	20.4	50/--
C50	50	21.7	50/--

Die Mold	A (mm)	B (mm)	C 100D/200D (mm)
C51	51	22	50/--
C54	54	23.4	50/--
C56	56	24.3	40/--
C57	57	24.7	40/--
C63	63	27.3	--/70
C64	64	27.7	35/--
C68	68	29.4	--/70
C73	73	31.6	--/65
C78	78	33.8	--/64
C85	85	36.8	--/60
C86	86	37.23	--/60

Large Tonnage

