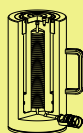


RSAC Series



Capacity:
20-150 ton

Stroke:
50-200 mm

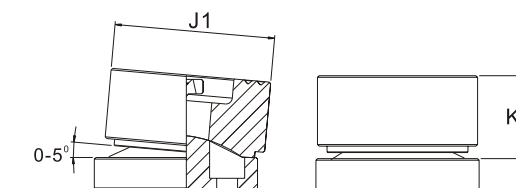
Maximum Operating Pressure:
700 bar

RSAC 液壓單動，鋁合金千斤頂

- 鋁合金設計，質輕易攜帶。
- 7075-T6鋁合金材質，能以最小重量承最大能力。
- 墊塊及缸底墊塊預防荷重的危險。
- 主軸及缸壁內外陽極處理防損耐腐且延長使用壽命。
- 強力彈簧加速主軸回縮速度。
- 特殊軟質環設計，防止主軸偏心荷載；避免磨耗刮傷油缸。
- 多層油封設計，預防金屬材質間互相磨擦，防止側向荷載受損。
- 上螺帽保護主軸超揚昇。
- 缸底墊塊、提把及鞍座均可拆卸，可在空間受限時拆除使用。
- 各型號均含SQB-3/8UF快速接頭及防塵蓋。
- 外表雷射刻字。

Single-Acting, Aluminum Cylinders

- ※Lightweight, aluminum design for maximum portability.
- ※7075-T6 Aluminum alloy components for maximum strength and minimum weight.
- ※Steel base plate and saddle for protection against piston rod damage.
- ※Anodizing treatment plunger, surfaces and inner of barrel resists damage and extends cylinder life.
- ※Maximum sized springs speed piston return and increase spring life.
- ※Special soft ring reduces wear caused by off-center loads.
- ※Composite bearings prevent metal-to-metal contact, increasing cylinder life and resistance to side-load.
- ※Stop ring for piston blow-out protection.
- ※Removable hardened saddle, handle and steel baseplate, which can be removed to use in limit space.
- ※All cylinders are equipped with SQB-3/8UF female coupler & dust cap.
- ※Laser carve on surface.



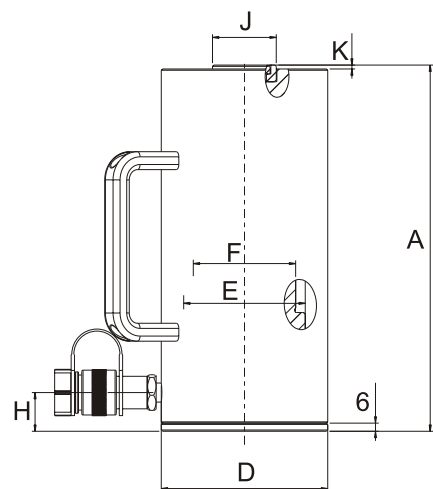
缸底墊塊底座螺孔 Steel Base Plate Mounting Holes			
型號-能力 Cylinder Model/ Capacity (ton)	底座孔距 Bolt Circle U (mm)	底座螺紋 Thread V (mm)	螺紋深度 Thread Depth Z (mm)
RSAC-20	70.0	M6	12
RSAC-30	80.0	M6	12
RSAC-50	110.0	M6	12
RSAC-100	160.0	M6	12
RSAC-150	200.0	M6	12

選配螺柱式傾斜墊塊尺寸 Optional Bolt Tilt Saddle Dimensions (mm)			
油壓缸 型號-能力 Cylinder Model/Cap. (ton)	墊塊型號 Model Number	墊塊尺寸 Saddle Diameter J1	墊塊突出 高度 Saddle Protrusion from Base K1
RSAC-50	XKCATRSAC-50	50.0	25.9
RSAC-100	XKCATRSAC-100	91.2	33.0
RSAC-150	XKCATRSAC-150	118.1	37.0

墊塊/鞍座 Saddle

RSAC-系列 均配有高硬度可移除式溝槽墊塊於起重時具防滑作用。偏心起重時請選用傾斜墊塊。

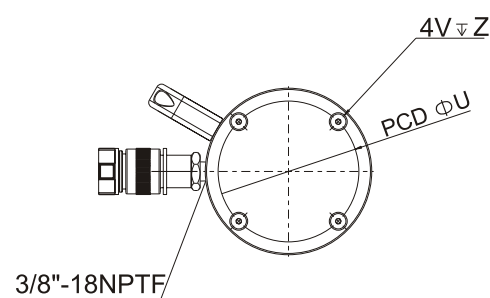
RSAC-Series are equipped with hardened removable "Ribbed saddles" to prevent slippage during jacking. For off-centre loading application, see optional tilting saddle.



缸底墊塊 Steel Base Plate

- 缸底墊塊作用於保護油壓缸底座免於損壞；不可任意移除。
- 千萬不要使用這些螺孔來安裝其他配件或設備在油壓缸上。

※ Do not remove steel base plate in order to protect the cylinder base.
※ No attachment to be used on base holes of the Aluminum cylinders.



鋁 VS. 鋼性質說明

Aluminum vs. Steel characteristic

- 鋁和鋼材的不同，在於鋁具較低的金屬疲乏。意即鋁合金油壓缸不適用於高重複性使用。

※ Due to different steel & Aluminum characteristics, it is strongly recommended not to be used for high-cycle applications

提把型式 Handle type	型號 Model Number
(S)	RSAC-202
■	RSAC-204
■	RSAC-206
■	RSAC-302
■	RSAC-304
■	RSAC-306
■	RSAC-502
■	RSAC-504
■	RSAC-506
■	RSAC-1004
■	RSAC-1006
■	RSAC-1008
■	RSAC-1506

提把型式 Handle type
(S) : 標準配件 standard equipped
(O) : 選配 option
● 焊提把 Weldable
★ 吊環螺柱 Eyebolt
▲ 活動提把 Removable strap handles
■ 螺牙式活動提把 Thread

外部尺寸 Outer Dimension													
能力 Cylinder Capacity ton (kN)	揚程 Stroke (mm)	受壓面積 Cylinder Effective Area (cm ²)	總油量 Oil Capacity (cm ³)	本身高 Collapsed Height A (mm)	伸長總高 Extended Height B (mm)	外徑 Outside Dia. D (mm)	內徑 Cylinder Bore Diam. E (mm)	主軸直徑 Plunger Dia. F (mm)	底部前進 油孔位置 Base to Adv. Port H (mm)	墊塊直徑 Saddle Dia. J (mm)	凸出高度 Piston Rod Protrusion K (mm)	重量 Weight (kg)	
20 (218)	50	31.2	156	174	224	85	63	50	27	40	3	3.6	
	100	31.2	312	224	324	85	63	50	27	40	3	4.1	
	150	31.2	468	274	424	85	63	50	27	40	3	4.6	
30 (309)	50	44.2	221	181	231	100	75	60	33	40	3	4.5	
	100	44.2	442	231	331	100	75	60	33	40	3	5.2	
	150	44.2	663	281	431	100	75	60	33	40	3	5.9	
50 (496)	50	70.9	354	186	236	130	95	80	30	50	3	8.5	
	100	70.9	709	236	336	130	95	80	30	50	3	9.8	
	150	70.9	1063	286	436	130	95	80	30	50	3	11.1	
100 (1002)	100	143.1	1431	271	371	188	135	110	46	94	3	19.6	
	150	143.1	2147	321	471	188	135	110	46	94	3	21.9	
	200	143.1	2863	371	571	188	135	110	46	94	3	24.2	
150 (1589)	150	227.0	3405	343	493	230	170	140	51	113	3	33.3	