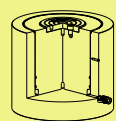


CSLS Series



Capacity:
50-1,000 ton

Stroke:
50-300 mm

Maximum Operating Pressure:
700 bar

CSLS 液壓單動，高噸位千斤頂

- 型低、高荷重適於狹小空間作業
- 可替換式的溝槽墊塊為標準配件
- 單動重力回縮
- 揚程極限時具溢油孔作用
- 主軸硬鉻處理耐磨、抗腐蝕
- 防塵環減少污染物附著，增加使用壽命
- 表面粉體塗裝美觀抗腐蝕、防銹
- 各型號均含SQB-3/8UF快速接頭及防塵蓋

Single-Acting, High Tonnage Cylinder

- ※ Lowest collapsed height for use in confined spaces.
- ※ Interchangeable, hardened grooved saddles are standard.
- ※ Single-acting, load return.
- ※ Overflow port functions as a stroke limiter.
- ※ Hard chrome plated plunger resists wear and corrosion.
- ※ Plunger wiper reduces contamination, extending cylinder life.
- ※ Powder coat finish for increased corrosion resistance and antirust.
- ※ Come with SQB-3/8UF female coupler & dust cap.



墊塊/鞍座 Saddle

- CSLS-系列 均配有高硬度可移除式溝槽墊塊於起重時具防滑作用。偏心起重時請選用傾斜墊塊。
- 選配之傾斜墊塊請參閱選擇對照資訊。

※ CSLS-Series are equipped with hardened removable "Ribbed saddles" to prevent slippage during jacking. For off-center loading application, see optional tilting saddle.

※ For information on optional tilt saddles, see selection chart.



油壓缸能力選擇 Cylinder Capacity

- 高於1000 噸以上油壓缸亦提供製造。
 - 請將您在舉昇系統中所需要的協助和相關技術資訊與就近的SUN RUN服務中心取得連繫。
- ※ More above 1000 tons cylinder capacity are also available.
- ※ Please contact SUN RUN office nearest to you for advice and technical assistance in the layout of your ideal Lift System.

其他選配說明

假如您需要選配其他要求於您所訂製的千斤頂/油壓缸上，請依下列規範字尾增加編號。

回縮彈簧 : XF

案例:

CSLS-502 選配回縮彈簧，訂製型號改為 CSLS-502XF 相關技術諮詢請與 SUN RUN取得聯繫。

Optional Features

To add optional features to your cylinder, add the follow suffixes to the end of the model number.

Spring return : XF

Example :

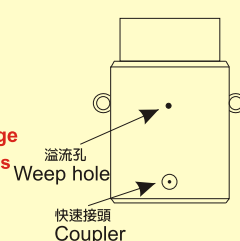
CSLS-502 with spring return, order: CSLS-502XF
Technical specifications for these features are available from SUN RUN.



警告

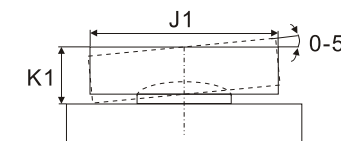
適用於單動，高噸位千斤頂
CSLP, CSLL, CSLS 系列
到達揚程極限時，溢流孔流出液壓油。
藉此警告並保護主軸超揚昇。

Apply to Single-acting, High tonnage cylinder CSLP, CSLL and CSLS series
When stroke limit is reached; overflow port ("weep hole") spurt oil to prevents piston from being overextended.



提把型式 Handle type	
(S) : 標準配件 standard equipped	
(O) : 選配 option	
● 焊提把 Weldable	
★ 吊環螺栓 Eyebolt	
▲ 活動提把 Removable strap handles	
■ 螺牙式活動提把 Thread	

	焊提把 Weldable
	吊環螺栓 Eyebolt
	活動提把 Removable strap handles
	螺牙式活動提把 Thread



提把型式 Handle type	型號 Model Number	能力 Cylinder Cap.	揚程 Stroke	受壓面積 Effective Area	本身高 Coll. Height	總重 Wt.	選配傾斜墊塊 Optional Tilt Saddle		
							型號 Model Number	直徑 Diam.	高度 Height
(S)		ton(kN)	(mm)	(cm ²)	A (mm)	(kg)	J1 (mm)	K1 (mm)	
★	CSLS-502	50 (496)	50	70.9	128	14	XKCAT-100	71	24
★	CSLS-504		100	70.9	178	18	XKCAT-100	71	24
★	CSLS-506		150	70.9	228	23	XKCAT-100	71	24
★	CSLS-508		200	70.9	278	28	XKCAT-100	71	24
★	CSLS-5010		250	70.9	327	33	XKCAT-100	71	24
★	CSLS-5012		300	70.9	378	38	XKCAT-100	71	24
★	CSLS-1002	100 (929)	50	132.7	143	24	XKCAT-100	71	24
★	CSLS-1004		100	132.7	193	32	XKCAT-100	71	24
★	CSLS-1006		150	132.7	243	40	XKCAT-100	71	24
★	CSLS-1008		200	132.7	293	49	XKCAT-100	71	24
★	CSLS-10010		250	132.7	343	58	XKCAT-100	71	24
★	CSLS-10012		300	132.7	392	66	XKCAT-100	71	24
★	CSLS-1502	150 (1390)	50	198.6	165	43	XKCAT-200	130	20
★	CSLS-1504		100	198.6	215	55	XKCAT-200	130	20
★	CSLS-1506		150	198.6	265	69	XKCAT-200	130	20
★	CSLS-1508		200	198.6	315	82	XKCAT-200	130	20
★	CSLS-15010		250	198.6	365	95	XKCAT-200	130	20
★	CSLS-15012		300	198.6	414	108	XKCAT-200	130	20
★	CSLS-2002	200 (1859)	50	265.6	193	66	XKCAT-200	130	20
★	CSLS-2006		150	265.6	293	101	XKCAT-200	130	20
★	CSLS-20012		300	265.6	443	154	XKCAT-200	130	20
★	CSLS-2502	250 (2562)	50	366.1	193	90	XKCAT-250	150	21
★	CSLS-2506		150	366.1	293	137	XKCAT-250	150	21
★	CSLS-25012		300	366.1	443	208	XKCAT-250	150	21
★	CSLS-3002	300 (3193)	50	456.2	235	137	XKCAT-300	195	75
★	CSLS-3006		150	456.2	335	198	XKCAT-300	195	75
★	CSLS-30012		300	456.2	485	288	XKCAT-300	195	75
★	CSLS-4002	400 (3919)	50	559.9	265	200	XKCAT-400	225	85
★	CSLS-4006		150	559.9	365	275	XKCAT-400	225	85
★	CSLS-40012		300	559.9	515	390	XKCAT-400	225	85
★	CSLS-5002	500 (5118)	50	731.1	295	289	XKCAT-500	250	91
★	CSLS-5006		150	731.1	395	390	XKCAT-500	250	91
★	CSLS-50012		300	731.1	545	540	XKCAT-500	250	91
★	CSLS-6002	600 (5983)	50	854.8	310	350	XKCAT-600	275	96
★	CSLS-6006		150	854.8	410	465	XKCAT-600	275	96
★	CSLS-60012		300	854.8	560	640	XKCAT-600	275	96
★	CSLS-8002	800 (8238)	50	1176.9	355	549	XKCAT-800	320	123
★	CSLS-8006		150	1176.9	455	709	XKCAT-800	320	123
★	CSLS-80012		300	1176.9	605	950	XKCAT-800	320	123
★	CSLS-10002	1000 (10260)	50	1466.4	385	729	XKCAT-1000	360	136
★	CSLS-10006		150	1466.4	485	921	XKCAT-1000	360	136
★	CSLS-100012		300	1466.4	635	1210	XKCAT-1000	360	136

型號 Model Number	外部尺寸 Outer Dimension								
	能力 Cylinder Cap.	揚程 Stroke	受壓面積 Effective Area	總油量 Oil Cap.	本身高 Coll. Height	伸長總高 Ext. Height	外徑 Outside Diam.	內徑 Bore Diam.	主軸直徑 Plunger Diam.
	ton(kN)	(mm)	(cm ²)	(cm ³)	A (mm)	(mm)	D (mm)	E (mm)	F (mm)
CSLS-502	50 (496)	50	70.9	355	128	178	125	95.0	95.0
CSLS-504		100	70.9	709	178	278	125	95.0	95.0
CSLS-506		150	70.9	1064	228	378	125	95.0	95.0
CSLS-508		200	70.9	1418	278	478	125	95.0	95.0
CSLS-5010		250	70.9	1773	327	578	125	95.0	95.0
CSLS-5012		300	70.9	2127	378	678	125	95.0	95.0
CSLS-1002	100 (929)	50	132.7	664	143	193	165	130.0	130.0
CSLS-1004		100	132.7	1327	193	293	165	130.0	130.0
CSLS-1006		150	132.7	1991	243	393	165	130.0	130.0
CSLS-1008		200	132.7	2654	293	493	165	130.0	130.0
CSLS-10010		250	132.7	3318	343	593	165	130.0	130.0
CSLS-10012		300	132.7	3981	392	693	165	130.0	130.0
CSLS-1502	150 (1390)	50	198.6	993	165	215	205	159.0	159.0
CSLS-1504		100	198.6	1986	215	315	205	159.0	159.0
CSLS-1506		150	198.6	2979	265	415	205	159.0	159.0
CSLS-1508		200	198.6	3972	315	515	205	159.0	159.0
CSLS-15010		250	198.6	4965	365	615	205	159.0	159.0
CSLS-15012		300	198.6	5958	414	715	205	159.0	159.0
CSLS-2002	200 (1859)	50	265.6	1330	193	243	235	183.9	183.9
CSLS-2006		150	265.6	3989	293	443	235	183.9	183.9
CSLS-20012		300	265.6	7977	443	743	235	183.9	183.9
CSLS-2502	250 (2562)	50	366.1	1832	193	243	275	215.9	215.9
CSLS-2506		150	366.1	5496	293	443	275	215.9	215.9
CSLS-25012		300	366.1	10996	443	743	275	215.9	215.9
CSLS-3002	300 (3193)	50	456.2	2281	235	285	310	241.0	241.0
CSLS-3006		150	456.2	6843	335	485	310	241.0	241.0
CSLS-30012		300	456.2	13710	485	785	310	241.0	241.0
CSLS-4002	400 (3919)	50	559.9	2800	265	315	350	267.0	267.0
CSLS-4006		150	559.9	8399	365	515	350	267.0	267.0
CSLS-40012		300	559.9	16770	515	815	350	267.0	267.0
CSLS-5002	500 (5118)	50	731.1	3656	295	345	400	305.1	305.1
CSLS-5006		150	731.1	10967	395	545	400	305.1	305.1
CSLS-50012		300	731.1	21900	545	845	400	305.1	305.1
CSLS-6002	600 (5983)	50	854.8	4277	310	360	430	329.9	329.9
CSLS-6006		150	854.8	12830	410	560	430	329.9	329.9
CSLS-60012		300	854.8	25710	560	860	430	329.9	329.9
CSLS-8002	800 (8238)	50	1176.9	5882	355	405	505	387.1	387.1
CSLS-8006		150	1176.9	17645	455	605	505	387.1	387.1
CSLS-80012		300	1176.9	35370	605	905	505	387.1	387.1
CSLS-10002	1000 (10260)	50	1466.4	7329	385	435	560	432.1	432.1
CSLS-10006		150	1466.4	21986	485	635	560	432.1	432.1
CSLS-100012		300	1466.4	43950	635	935	560	432.1	432.1

外部尺寸 Outer Dimension				
底部前進油孔位置 Base to Advance Port H (mm)	墊塊直徑 Standard Saddle Diam. J (mm)	凸出高度 Saddle Protrusion from Plngr. K (mm)	主軸孔深度 Depth of plunger Hole L (mm)	總重 Weight (kg)
30	71	2	15	14
30	71	2	15	18
30	71	2	15	23
30	71	2	15	28
30	71	2	15	33
30	71	2	15	38
30	71	2	15	24
30	71	2	15	32
30	71	2	15	40
30	71	2	15	49
30	71	2	15	58
30	71	2	15	66
39	130	2	25	43
39	130	2	25	55
39	130	2	25	69
39	130	2	25	82
39	130	2	25	95
39	130	2	25	108
50	130	2	25	66
50	130	2	25	101
50	130	2	25	154
50	150	2	25	90
50	150	2	25	137
50	150	2	25	208
59	139	5	25	137
59	139	5	25	198
59	139	5	25	288
70	159	5	25	200
70	159	5	25	275
70	159	5	25	390
80	179	5	25	289
80	179	5	25	390
80	179	5	25	540
85	194	5	25	350
85	194	5	25	465
85	194	5	25	640
100	224	5	25	549
100	224	5	25	709
100	224	5	25	950
110	249	5	25	729
110	249	5	25	921
110	249	5	25	1210

